

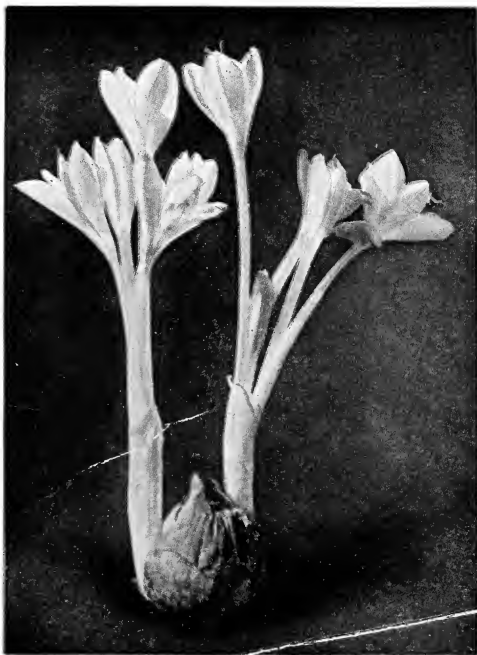
Historic, Archive Document

Do not assume content reflects current scientific knowledge, policies, or practices.

Spring Hill Nurseries

Tippecanoe City, Ohio

Bulbs · Perennials · Trees · Shrubs · Vines · Roses



Colchicum Autumnale.

This
is
the
Bulb
that
Grows
and
Blooms
with
No
Water
No
Soil
No
Care
No
Attention

Surprising
and
Beautiful

It is Impossible to Keep Them from Blooming

They will bloom under nearly any conceivable condition. You can put them in your refrigerator, in a dark cellar, pack them away in boxes, plant them in the ground, or set them on the dining room table. Outside of destroying them, it is impossible to keep them from blooming. If allowed to bloom without sunlight, however, the flowers are pale and not as attractive as if given a little sunlight. When through blooming plant them in your flower beds and they will increase and bloom for you each year.

Price { EACH, 30c POSTPAID.
LARGE BULBS { FOUR BULBS, \$1.00, POSTPAID.
TEN FOR \$2.00, POSTPAID.

Beauty Bush (Kolkwitzia Amabilis)

New Flowering Shrub From China.

Following is a description of this new shrub, taken from a bulletin of the Arnold Arboretum, Harvard University, of June 14, 1927, in which they say:

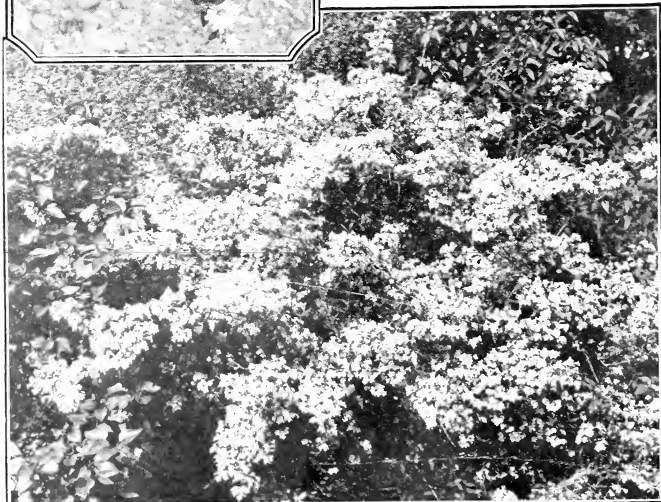
Kolkwitzia Amabilis is now in blossom on Bussey Hill, where a young and vigorous plant is flowering for the first time. Every succeeding year emphasizes the garden value of this plant for which the descriptive title of Beauty-Bush has been aptly coined.

It is a twiggly shrub, growing from 6 to 8 feet tall, with the inner stems erect or ascending and the outer ones arching to the ground, the whole plant forming a dome-shaped mass. The flowers are produced along the whole length of the branches in clusters at the ends of short, leafy shoots. They are tubular with a gaping mouth, deep pink without, stained with yellow-brown on the lower throat and lip. The pedicels and ovary are clad with spreading, white, bristle-like hairs which add to the attractiveness of the inflorescence.

The graceful habit of the plant, its free-flowering qualities and pleasing color, combined with perfect hardiness, make this one of the most beautiful, as well as most useful shrubs that China has given to the gardens of this country. It was introduced into cultivation by Wilson, and has been growing in the arboretum since 1907.

Related to the *Weigellas* or *Diervillas*, it is far more beautiful than any of them, and is destined to become one of the most familiar plants in our gardens.

**THESE PLANTS ARE RARE AND
BEAUTIFUL—ORDER EARLY
PRICE
\$1.50 EACH; 3 FOR \$3.50, POSTPAID.**



From an illustration of Beauty-Bush or *Kolkwitzia* furnished us by courtesy of Arnold Arboretum, Harvard University.

Peonies

We are only listing those varieties which have proven through close observation to be the best for general planting.

Peonies should be planted in the Fall to be assured of blooms the first year, although Spring planting will sometimes produce flowers.

DOCTOR BRETON-NEAU. Rose type. The guards are of a pale lilac color with centers of milk-white; very fragrant. **50c each; 3 for \$1.25.**

EUGENE VERDIER. Rose type of a delicate hydrangea-pink, blooms on long stems. A well and favorably known variety. Flowers are fragrant and bloom in great profusion. **50c each; 3 for \$1.25.**

FESTIVA MAXIMA. Rose type. Probably no other Peony is as widely grown as this variety, and none of the whites are as well and favorably known. While the blooms are very fragrant and the stems of a good length, this flower is especially adapted for cut flowers when bouquets are hard to obtain because of the earliness of the season. Color snow-white, center petals of purplish carmine. **Include this one. 50c each; 3 for \$1.25.**

LOUIS VAN HOUTTE. This is one of the old standby varieties and needs no introduction. You can make no mistake by planting Louis Van Houtte Peonies because the bright red flowers are always a source of much pleasure and enjoyment. Used as specimen plants their bright red flowers lend just the right amount of color to any lawn or garden. **50c each; 3 for \$1.25.**

MEISSONIER. Pomb shape flowers of brilliant crimson, which can hardly be surpassed for beauty when used as specimens or planted in groups. Very attractive and when cut make excellent bouquets for all occasions. **50c each; 3 for \$1.25.**

TRIOMPHE DE L'EXPOSITION DE LILLE. A beautiful rose type Peony of hydrangea-pink tinted violet-rose. The blooms are large and compact, making a very showy plant when in full bloom. We sold many of this variety last year, and all of our customers who planted them were enthusiastic in their praise of this beautiful flower. **50c each; 3 for \$1.25.**

The Earliest Peony of the Season

OFFICINALIS RUBRA. A brilliant crimson rose-type Peony, blooming three weeks before the earliest of the other varieties. An old favorite of our grandmothers' gardens, and no new Peony has appeared to take its place as to early blooming qualities. It is a sure bloomer, blooming every year, and a wonderful addition to your garden. **\$1.00 each.**

Profits in Peonies

Peonies produce annually large and heavy crops of beautiful flowers. They come at a time when flowers are in demand, before the Summer blooms have glutted the market. If you can plant them on ground with a south slope, ground that is light and quick to grow in the Spring, you can get the blossoms for Decoration Day in a great many sections. For anyone interested in planting a quantity of Peonies, we will quote a price of 25 for \$12.00; 50 for \$23.50; 100 for \$45.00, f. o. b. Tiptecanoe City.



Peony Eugene Verdier.

Choice Bulbs for Fall Planting

Darwin Tulips

- CLARA BUTT.** Salmon-rose. Popular.
DREAM. A delicate shade of lilac. Erect, long stems.
EUROPE. A salmon-scarlet that produces large flowers on stiff stems.
GRETCHEN. Beautiful pale rose colored flowers on tall stems.
THE SULTAN. A maroon-black for all those who prefer a dark velvety color.
INGLESCOMBE YELLOW. Flowers are a bright, flashing yellow.
PRIDE OF HAARLEM. Bright rose.

Price of Darwin Tulips, 10 for \$1.00; 25 for \$2.25; 100 for \$8.50.

Single Early Tulips

- ARTUS.** A bright scarlet of great beauty.
CANARY BIRD. Yellow.
COTTAGE MAID. Rose colored flowers
KEIZERSKROON. A bright red with gold border.
PRINCE OF AUSTRIA. Brownish orange.
ROSE GRIS DE LIN. Soft rose color.
ROSE LA REINE. Rose.

Price, 10 for 80c; 25 for \$1.80; 100 for \$6.50.



Darwin Tulip, Europe.

Double Early Tulips

IMPERATOR RUBRORUM. Bright scarlet flowers.

SALVATOR ROSA. Blooms are a beautiful rose color.

TOURNESOL. A brilliant mixture of red and yellow.

Price of Double Tulips, 10 for \$1.00; 25 for \$2.00; 100 for \$7.00.

Narcissus

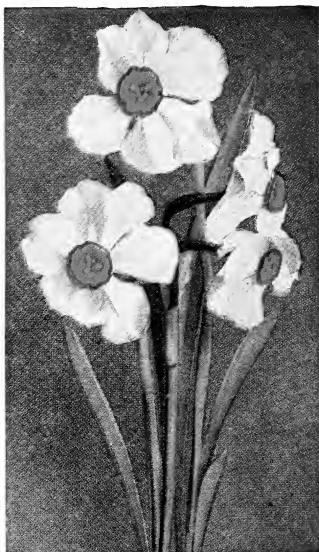
Narcissus are exceedingly hard to obtain owing to the embargo placed against them.

DOUBLE VAN SION. True double yellow. One of the best kinds.

GOLDEN SPUR. A large golden yellow.

POETICUS. White with a scarlet edge.

Price of Narcissus, 10 for \$1.50; 25 for \$3.50; 100 for \$12.00.



Narcissus Poeticus.

BULBS—Continued.

Crocus

BLUE. These beautiful little flowers are the first signs of Spring.

WHITE. A majority of white bulbs is preferable, as white attracts the most attention.

YELLOW. Yellow is also recommended, for bright colors are most enjoyed just when the snow is leaving.

Price of Crocus, 10 for 50c; 25 for \$1.00; 100 for \$2.50.

Bright Colored Hyacinths

RED, Single. Flowers borne well on stiff, well-formed spike.

WHITE, Single. The flower heads are well filled

BLUE, Single. Beautiful blooms that fill the air with a fragrance that cannot be excelled. Bells are perfect in shape and tightly massed on spike.

PINK, Single. A delicate shade of pink.

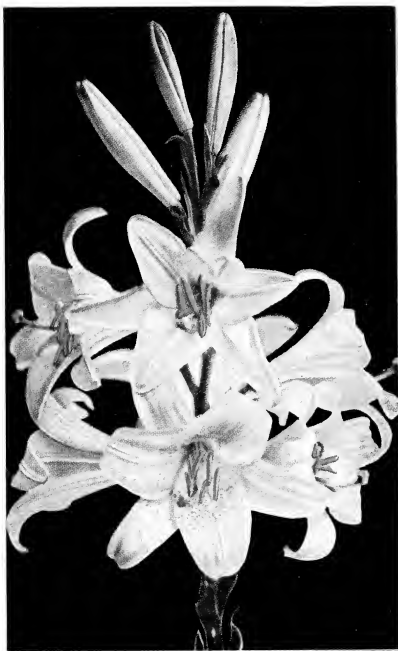
YELLOW, Single. A beautiful flower.

Price, 15c each; 50 for \$6.50; 100 for \$12.50.

Muscari or Grape Hyacinths

HEAVENLY BLUE. While there are several kinds of Muscari, we consider this variety the best for mass planting. Their flowers open just about the time that the Chionodoxas and Crocuses are going. They do very well in the wild garden and also in the grass if it is not too rank. They are nice under trees and along the borders where they may be left undisturbed.

Price, 10 for 50c; 25 for \$1.00; 100 for \$3.00.



Lillium Candidum.

Star of Bethlehem (Ornithogalum Umbellatum)

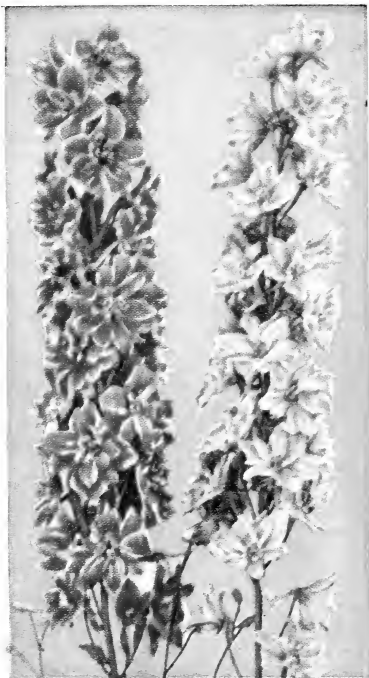
A bulbous plant, with grasslike foliage. It blooms very early, in April and May, with green and white, star-shaped flowers on six-inch stems, and very profusely. A much desired plant for your rock garden and border beds. It is not particular whether in the shade or in the sun, seemingly doing equally as well in any location. It is wonderful for wild gardens, and makes an attractive ground cover in a location where they can remain undisturbed, as they require no care or cultivation.

Price, 10 for 50c; 25 for \$1.00; 100 for \$2.50.

Hardy Lilies for Fall Planting

Regal Lily Bailey's Cyclopedia of Horticulture says of it: "One of the most beautiful of all known Lilies, the exquisite blending of tints and colors forming a charming contrast with the rich, deep green foliage." Will exist in one location without transplanting, and will grow and do well where most other Lilies are failures. Mature bulbs produce from five to fifteen flowers on a single stem, which retain their freshness over quite a long period. Blooming size bulbs. **35c each; 3 for \$1.00.**

Lillium Candidum (Madonna Lily). This well known and much sought for Lily is considered one of the choicest of the Lily tribe and one of the easiest to grow. Trumpet-shaped blooms are pure white and borne in spikes on tall, rigid, leafy stems. Bulbs should be planted as early as possible in the Autumn. **30c each; \$3.00 per 12.**



Delphiniums.

gentian blue, white center. It has very long spikes, flowers are well spaced and compact, and a beautiful semi-double. One of the best. **Large clumps, \$1.00 each; 3 for \$2.00.**

BLUE BOY. A new introduction of rich deep blue with white eye. The flowers are single, very large, densely massed on long stems. It is one of the thriftiest of the new Delphiniums, which, with its deep blue color, makes it a very desirable variety. **Large clumps, \$1.00 each; 3 for \$2.00.**

PHYLLIS. A brilliant novelty, a seedling of Andrew Carnegie, and although resembling it in color it is an improvement in every respect. The semi-double flowers are larger and more graceful in shape and habit. It is an attractive lilac in color, spotted with pink and sky-blue. One of the very finest Delphiniums. **Large clumps, \$1.50 each; 3 for \$4.00.**

ROSEBOURNE. A novelty with large, double flowers. Rich gentian blue, with white centers on tall spikes. **Large clumps, \$1.00 each; 3 for \$2.50.**

New Hybrid Delphiniums

Imported Strains

Perhaps no other flower has in recent years undergone the transformation and improvement as has the Delphinium.

These superb new varieties, in all shades of blue, lavender, violet and purple, are truly wonders of the floral kingdom.

In our plantings, we have had many flowers this year, with a blooming stem 6 feet or more in height, and up to 3½ feet of flower on the stem. Many of the individual flowers measure 2 inches in diameter and 2½-inch blossoms are not uncommon.

SKY BLUE. A brilliant novelty. A seedling discovered in our Delphinium seed beds. No doubt a cross between several new varieties. Borne on long spikes, with semi-double flowers, very compact. The outer petals are light mauve, spotted with pink and sky-blue. Light center. One of the finest of Delphiniums. The semi-double individual flowers measure 2½ inches in diameter, and the whole spike of flowers bloom at nearly the same time. It is very thrifty growing, and not subject to blight or mildew. The fluffy flowers are truly wonderful. **Large clumps, \$1.50 each; 3 for \$4.00.**

MILICENT BLACKMORE. This is one of the most splendid new varieties. The long spikes are of perfect form, the pipes beautifully placed and enormously large. The color is a soft combination of blue and mauve with a large black center. **Large clumps, \$1.00 each; 2 for \$2.00.**

MRS. F. W. SMITH. A novelty, with very large flowers of a rich

A New Pink Perennial Spirea

ASTILBE GLORIA. A beautiful new variety of Astilbe recently imported from Holland. It is a relative of the Astilbe you get from your florist at Easter time, but it is more beautiful than any variety forced in a greenhouse. Individual plants bear from twenty to fifty spikes of beautiful, large, rose-pink, feathery flowers, on stems eighteen inches long, in June and July. They are of very easy culture and like a moist location in any ordinary garden soil. A greatly admired flower that puts the desired touch to your garden. **Price, 50c each.**

Hardy Perennials

Old Fashioned Flowers

ACHILLEA

MILLEFOLIUM CERISE ROSE-UM. Cut-leaved foliage. Deep rose colored flowers. 15c each; \$1.50 per doz.

PTARMICA (The Pearl). White flowers. 15c each; \$1.50 per doz.

ASTER

ST. EGWIN. Delicate pink color. 15c each; \$1.50 per doz.

STOKES' ASTERS. Blue flowers. 15c each; \$1.50 per doz.

ASCLEPIAS - Butterfly Weed

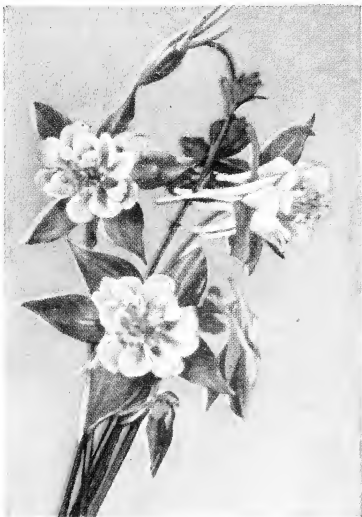
TUBEROSA. Orange flowers. 15c each; \$1.50 per doz.

CANTERBURY BELLS

HAREBELL. Blue and white. 15c each; \$1.50 per doz.

CHAMOMILE

Red, white, pink, yellow. 15c each; \$1.50 per doz.



Columbine.

CHRYSANTHEMUM

HARDY VARIETIES. Red, white, pink, yellow. 15c each; \$1.50 per doz.

AQUILEGIA - Columbine

ENGLISH LONG SPUR. Purple, blue, red and yellow. 15c each; \$1.50 per doz.

CHRYSANTHA (Yellow-Flowered Columbine). Primrose-yellow, long spurs. 15c each; \$1.50 per doz.

COREOPSIS

LANCEOLATA. Golden yellow. Valuable for cutting. Easy culture. Used for borders, etc. June to September. 15c each; \$1.50 per doz.

DIGITALIS - Foxglove

GLOXINIAEFLORA. A stately, picturesque plant with spikes of bloom 3 to 4 inches in height. Color ranges from rose to deep purple. 15c each; \$1.50 per doz.

PLATYCODON - Japanese Bellflower

Large, bell-shaped, deep blue flowers. One to two feet high. July until frost. 15c each; \$1.50 per doz.

SHASTA DAISY

ALASKA. A splendid form of the Shasta Daisy. The whole plant is gigantic, but compact and graceful; flowers white, four and five inches across. Very free flowering; small, yellow disc. Good for cut flowers. 15c each; \$1.50 per doz.



Gaillardia.



Iris, Pallida Dalmatica.

HARDY PERENNIALS—Continued.

FUNKIA - Day Lily

FORTUNEI var. AUREA. The leaves of this variety are beautifully variegated with white. Very hardy. 15c each; \$1.50 per doz.

SUBCORDATA. Very large, pure white lily-shaped flowers. August and September. 25c each; \$2.50 per doz.

GAILLARDIA - Blanket Flower

GRANDIFLORA. Probably one of the most universal flowers planted among the hardy perennials. Conspicuous for their profusion of bloom. Flowers intense, blood-crimson, margined with golden yellow. 18 to 24 inches. 15c each; \$1.50 per doz.

HARDY HIBISCUS

Tall growing, especially adapted to backgrounds and shrubby borders. Of easiest culture, and bloom the entire season. Plants grow 4 to 5 feet tall. 15c each; \$1.50 per doz.

MALLOW MARVEL. A beautiful deep red color. Very effective.

WHITE, CRIMSON EYE. This is probably the best known and the most planted of the Hibiscus.

TRITOMA - Red Hot Poker

The early free and continuous blooming qualities of this flower make it one of the greatest bedding plants. It blooms in August and September. Large spikes of flowers are a rich orange color and they succeed in any rich garden soil. 25c each; \$2.50 per doz.

HEMEROCALLIS - Yellow Day Lily

Popular hardy plants; belong to the Lily family. They succeed everywhere and should always be included in the border of old-fashioned hardy plants. 15c each; \$1.50 per doz.

THUNBERGI. The latest to flower; rich buttercup-yellow, funnel-shaped flowers throughout July. 4 feet.

MONARDA - Oswego Tea

DIDYMA. A bushy plant growing about 2 feet high, covered with round heads of deep red flowers. Its petals are similar to the Cactus Dahlia; also known as Bergamot and Mint on account of the delicious fragrance of their leaves when crushed. 15c each; \$1.50 per doz.

LUPINUS - Lupins

The Lupinus produces beautiful long spikes of pear-shaped flowers a foot long on stems 3 feet high. They are perfectly hardy and very showy. We can supply them in the following colors: White, blue, rose, and mixed. 15c each; \$1.50 per doz.

GYPSOPHILA - Baby's Breath

Very branching or spreading slender shrubs, of very easy culture, and very desirable where a mass of delicate, misty white bloom will fill a bare place. 15c each; \$1.50 per doz.

HELIANTHUS

MISS MELLISH. An improved variety of Helianthus. Profuse bloomer and supplies an enormous quantity of cut flowers. Yellow. 15c each; \$1.50 per doz.

IRIS—THE RAINBOW FLOWER

Every year the beautiful Iris is becoming more and more popular, and has gained the distinction of combining all the colors of the rainbow. Delicate shades are numerous and wonderful color schemes can be worked out when planted in beds or borders.

PALLIDA DALMATICA. Lavender with large, drooping falls. 15c each.

QUEEN OF MAY. A beautiful rose color shaded lighter. 15c each.

HONORABILIS. Flowers of rich yellow and mahogany. Borne well on stout, tall stems. 15c each.

MADAME CHEREAU. Large white flowers tinged with blue. A beautiful variety for cut flowers. 15c each.

MRS. H. DARWIN. Blooms a pure white. 15c each.

MIDNIGHT. Dark velvety blue that is indispensable for the working out of color combinations, as the contrast is most effective with lighter shades. 15c each.

HARDY PERENNIALS—Continued.

HOLLYHOCKS

DOUBLE. Immense double and semi-double flowers; all shades and colors mixed. 15c each; \$1.50 per doz.

LOBELIA - Cardinal Flower

Rich fiery red flowers; strong plants often producing 10 to 18 spikes in August and September. 15c each; \$1.50 per doz.

RUDBECKIA

The perennial form of the Black-Eyed Susan. One of the most popular hardy plants. Deep orange-yellow flowers and long, wiry stems. Fine cut flowers. 15c each; \$1.50 per doz.

SEDUM - Stonecrop

A very pretty, erect-growing perennial attaining a height of 18 inches. It has broad, light green foliage with immense heads of handsome, showy, rose colored flowers. Indispensable as a Fall-blooming plant. 15c each; \$1.50 per doz.

DIANTHUS - Sweet William

BARBATUS. Great masses of bloom of extremely rich and varied colors. 15c each; \$1.50 per doz.

GYPSOPHILA - Baby's Breath

Misty white bloom. 15c each; \$1.50 per doz.

HARDY GRASSES

ERIANTHUS RAVENNAE. Plume or Pampas Grass. 15c each; \$1.50 per doz.

EULALIA ZEBRINA. Yellow bands across leaf. 15c each; \$1.50 per doz.

LINUM - Perennial Flax

PERENNE. Large white or blue. 15c each; \$1.50 per doz.

POPIES

ORIENTAL, ASSORTED. These are the regal representatives of this popular genus, growing 3 to 3½ feet high, and far surpassing the annual and biennial varieties. 15c each; \$1.50 per doz.

HARDY SWEET PEA

Blooms continuously all Summer long. Flowers are larger than the tender Sweet Peas and will continue to bloom even in hot, dry weather. Ours are a mixture of white, pink and red that will produce bouquets for you every year. 15c each; \$1.50 per doz.

SCABIOSA - Mourning Bride

JAPONICA. Handsome border plants and should be planted in every garden. Lavender-blue flowers from July to September that last a long time when cut and put in water. 15c each; \$1.50 per doz.

PYRETHRUM

PERSIAN DAISY. Fernlike foliage in the Spring, followed by a profusion of handsome blooms in Summer. Unequaled as cut flowers. Hardy under any conditions. 15c each; \$1.50 per doz.

ROSEUM. A beautiful rose-pink daisy-like perennial about two feet.

ULIGINOSUM. A perennial with clusters of golden-centered white flowers. 4 feet. September.

PHLOX

No class of hardy plants is more desirable than the perennial Phloxes. They will thrive in any position and can be used to advantage in any kind of border planting, in large groups on the lawn. All the hardy Phloxes are admirably adapted for cutting.

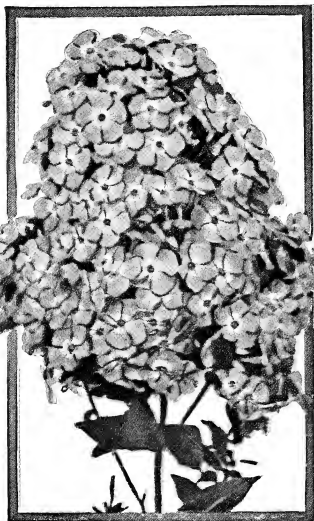
BRIDESMAID. White, crimson eye. 15c each; \$1.50 per doz.

MISS LINGARD. The best Phlox in cultivation. Immense heads of pure white flowers in June, September and October. \$1.50 per doz.

RHEINLANDER. Beautiful salmon-pink; immense size. 15c each; \$1.50 per doz.

RYNSTROOM. Big trusses, rosy pink flowers. 20c each; \$2.00 per doz.

SUBULATA. Moss or Mountain Pink, and an early, Spring-flowered type with evergreen foliage. Valuable for covering ground or graves. 15c each; \$1.50 per doz.



Phlox, Rynstroom.



Althea—Rose of Sharon.

Flowering Shrubs

Almond - Prunus

DOUBLE FLOWERING ALMOND. Pink and white varieties. Hardy as far north as Ontario. 2 to 3 ft., 75c each; 2 for \$1.40.

Althea - Rose of Sharon

(*Hibiscus Syriacus*)

One of the old reliable shrubs. Effective when planted as a hedge.

JEANNE D'ARC. Double, white.

RUBIS. Single, red.

TOTUS ALBUS. A single white.

AULISSIMA. Purple. Shrub form.

BOULE DE FEU. Double red. Shrub form.

MONSTROUS. Double, red.

Prices, 2 to 3 ft., 35c each; 3 for \$1.00.

Barberry - Berberis

JAPANESE (*Thunbergi*). Of all the Barberries in cultivation this one is probably the best known and most planted. Grows low and dense, making it very adaptable for planting along walks and borders where a rank-growing shrub would be offensive. Every driveway can be beautified greatly by planting Barberry and we do not hesitate to recommend it. 12 to 18 inches, 25c each; 18 to 24 inches, 40c each; 3 for \$1.10.

Butterfly Bush - Buddleia

SUMMER LILAC (*Variabilis magnifica*). This shrub of comparatively recent introduction has grown into favor almost immediately. It is a semi-herbaceous plant by which we mean in some latitudes it will die down to the ground, and while perfectly hardy, we recommend covering the roots with manure, leaves or other material as Winter approaches, as it will help to produce a heavy growth the next season. It is very hardy; blooms the first season, usually from June until frost; the blossoms are borne on long, graceful stems, which terminate in tapering panicles of lilac colored flowers that are of miniature size; the flower head is frequently ten inches long. 35c each; 3 for 90c.

Dogwood - Cornus

CORNELIAN CHERRY (*Mascula*). Ornamental shrub or small tree of dense growth, glossy leaves; attractive in early Spring with its yellow flowers. 2 to 3 ft., \$1.00 each.

ELEGANTISSIMA. This is a beautiful plant. The leaves marked with white. 18 to 24 in., 50c. 2 to 3 ft., 75c each; 2 for \$1.40.

RED-TWIGGED (*Sanguinea*). Grows 10 to 12 feet high, purple or dark blood-red branches. Flowers greenish white. Fruit is black. 18 to 24 in., 30c; 2 to 3 ft., 40c each.

WHITE (*Florida*). Handsome foliage, often assuming a brilliant Fall coloring; large, white, snowy flowers appearing in May. 18 to 24 in., 35c. 2 to 3 ft., 70c. 3 to 4 ft., \$1.00; 3 for \$2.50.



Buddleia.

SHRUBS—Continued.

Indigo - Amorpha

FRUTICOSA. Spreading habit with fine foliage. Dark purplish flowers. 35c each; 3 for \$1.00.

Deutzia

An elegant species of strong, erect-growing shrubs. Especially prized for the beautiful clusters of blossoms in May.

PRIDE OF ROCHESTER. Showy, early, large-flowering sort; blossoms in May before others. Grows to 6 to 8 feet high. White flowers, large and double. One of the best of the Deutzias. 2 to 3 ft., 40c each; 3 for \$1.00.

LEMOINEI. Spreading shrub to three feet in height. Its pure white flowers appear in broad panicles. A very desirable shrub, more vigorous and with more showy flowers than some of the other forms. Excellent for forcing. Very hardy. 18 to 24 in., 50c each; 3 for \$1.40.

GRACILIS. A handsome, dwarf, and bushy little shrub with slender, often arching branches. A neat shrub that blooms in May, clothing its branches in pure white flowers. Valuable for shrubberies or for forcing. 12 to 18 in., 50c each; 3 for \$1.40.

Lilac - Syringa

Lilacs are among the most popular and ornamental of the flowering shrubs.

PERSIAN LILAC. A very hardy sort, native of Persia. Bright purple flowers. 2 to 3 ft., 75c each; 3 for \$2.00.

VULGARIS (Old-fashioned Purple). The most fragrant of all, and the kind our grandmothers used to plant. 2 to 3 ft., 50c each; 3 for \$1.40.

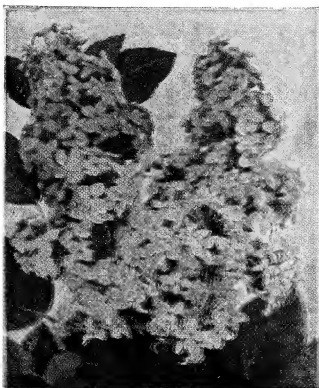
Golden Bell - Forsythia

FORTUNE'S. Grows with upright or arching branches. 18 to 24 in., 30c each. 3 to 4 ft., 40c each; 3 for \$1.10.

WEeping (Suspensa). 5 feet. Branches often drooping on ground and taking root. 2 to 3 ft., 35c each. 3 to 4 ft., 40c each; 3 for \$1.10.



Hydrangea Paniculata Grandiflora.



Lilac.

Honeysuckle - Lonicera

FRAGRANT BUSH (Fragrantissima). Sweet scented though flowers are not very showy. 18 to 24 in., 30c each. 2 to 3 ft., 40c each; 3 for \$1.00.

MORROWI. Pure white flowers appear in May or June and are followed by red fruits, which remain until late Fall. 18 to 24 in., 30c each. 2 to 3 ft., 40c each. 3 to 4 ft., 50c each; 3 for \$1.40.

TARTARIAN (Tatarica). Old-time favorite shrub. Attains height of about 10 feet and is extremely easy to cultivate. Flowers are pink, white or cream colored. 18 to 24 in., 30c each. 2 to 3 ft., 40c each. 3 to 4 ft., 50c each; 3 for \$1.40.

Hydrangea

ARBORESCENS. Very showy variety; excellent for borders. 18 to 24 in., 50c each. 2 to 3 ft., 75c each; 2 for \$1.40.

PANICULATA GRANDIFLORA. Large, white flowers in August and September. 18 to 24 in., 50c each. 2 to 3 ft., 75c each; 2 for \$1.40.

SHRUBS—Continued.



Spirea Van Houttei.

Philadelphus - Mock Orange

GRANDIFLORUS. Large, flowering shrub, growing to about 8 feet, with spreading branches. 18 to 24 in., 30c each. 2 to 3 ft., 40c each; 3 for \$1.10.

LEMOINEI. Very sweet scented. 18 to 24 in., 35c each; 2 to 3 ft., 50c each.

CORONARIUS. Deliciously fragrant. 18 to 24 in., 30c each. 3 to 4 ft., 40c each; 3 for \$1.10.

VIRGINAL. A real white bouquet of immense size. 18 to 24 in., 55c each. 2 to 3 ft., 75c each; 2 for \$1.40.

Tamarix

These plants are very beautiful all the year, in Winter for their coloring of the bark and in Summer for the light green, feathery foliage and large, loose panicles of purplish flowers.

AFRICANA. An upright grower. Blooms in May. 2 to 3 ft., 35c each; 3 for \$1.00.

HISPIDA. A graceful shrub, upright branches, flowers pink, appearing in August. 2 to 3 ft., 50c each; 3 for \$1.40.

Snowball - Viburnum

ARROW-WOOD (Dentatum). A gorgeous, upright, native shrub, thriving best in moist soil. It is especially hardy, doing well from New Brunswick to Minnesota. It blooms in May or June, followed by black fruit. 2 to 3 ft., 50c each; 3 for \$1.40.

COMMON (Var. Sterilis). This is the well known, common Snowball of the old-fashioned gardens. Besides the snow-white flowers in May, the foliage is decorative and assumes a bright color in Fall. 2 to 3 ft., 50c each; 3 for \$1.40.

Spirea, the Most Popular Shrub

There is no more dependable shrub than Spirea. Its graceful foliage and growth and the beautiful blossoms are a delight the season through. A selection of varieties, planted in masses or rows will assure continuous bloom to the end of Summer. The early Fall frosts touch the leaves with scarlet.

VAN HOUTTEI. One of the most beautiful or perhaps the most beautiful of early Spireas. Covered with white flowers in May. 18 to 24 in., 25c each. 2 to 3 ft., 40c each. 3 to 4 ft., 50c each; 3 for \$1.40.

BILLIARDI. A shrub that grows to 6 feet in height with oblong leaves. Flowers are bright pink. 2 to 3 ft., 40c each; 3 for \$1.10.

PRUNIFOLIA. Slender, upright branches. Flowers are pure white on slender pedicels. 2 to 3 ft., 75c each.

ANTHONY WATERER. A very free-flowering, compact, dwarf shrub, with bright crimson flowers in dense corymbs. 12 to 18 in., 60c each; 3 for \$1.40.

SHRUBS—Continued.

Snowberry

WHITE SNOWBERRY. The rose colored flowers appear in loose, often leafy racemes in July and August. White, waxy berries until late Fall. 18 to 24 in., 30c each; 2 to 3 ft., 50c each; 3 for \$1.40.

RED SNOWBERRY (Coralberry). Compact bush. 2 to 3 ft., 35c each; 3 for \$1.00.

Silver Thorn - Elaeagnus

LONGIPES. A highly ornamental shrub with handsome foliage and reddish brown branchlets. The flowers are one-half inch long appearing on the lower part of the branches; yellowish white, fragrant. Scarlet fruit ripens in June or July. 2 to 3 ft., 50c each; 3 for \$1.40.

Witch Hazel - Hamamelis

VIRGINIANA. Hardy ornamental shrub or small tree with deciduous alternate leaves. Petals of flowers are bright yellow, appearing from September to November. Thrives best in moist location. Valuable on account of blooming at a time when hardly any other shrub outdoors is in flower. 2 to 3 ft., 50c each; 3 for \$1.40.

Rhodotypos

KERRIOIDES. Sometimes called the White Kerria. A very ornamental, deciduous, much-branched shrub, usually from 3 to 7 feet; handsome and distinct, and is hardy as far north as Massachusetts. Has bright green foliage. Made very conspicuous by its white flowers in May or June and black fruits in the Fall. 2 to 3 ft., 50c each; 3 for \$1.40.

Sweet Pepper Bush - Clethra

ALNIFOLIA. A native shrub, to 4 feet tall, bearing profusely spikes of yellowish white, scented flowers in August. 18 to 24 in., 50c each; 3 for \$1.40.

Weigela - Diervilla

An ornamental and popular class of graceful shrubs. The beautiful trumpet-shaped flowers appear in May and June in such profusion as to almost completely hide the foliage. Is very desirable for the border and for grouping. They vary in color from pure white to dark red. The following are choice varieties:

ROSEA. A choice, vigorous sort, which yields an immense crop of deep pink, trumpet-like flowers in June, and bear a scattering of blossoms through the rest of the season. 18 to 24 in., 30c each; 2 to 3 ft., 50c each; 3 for \$1.40.

EVA RATHKE. The flowers are a deep carmine-red, erect growing. A most profuse bloomer in Spring and again in Autumn. 18 to 24 in., 50c each; 2 to 3 ft., 75c each.

Privet - Ligustrum

REGELIANUM (Regel's Privet). A low, dense shrub with horizontal, spreading branches. The leaves are oblong and a beautiful glossy green. Very useful as a low shrub in foundation plantings. 12 to 18 in., 25c each; 18 to 24 in., 50c each; 3 for \$1.40.



White Snowberry.



Weigela Rosea.

Hedge Plants

Beautify with Hedges Do you want to enclose your home grounds with a fence that will add beauty and attractiveness to the surroundings, and will never rot down nor rust out; but will become more beautiful and substantial each year? Many plants or shrubs may be used with happy results and pleasing effects in making a hedge fence, but the varieties we are listing below are far superior to any others and will answer all the requirements demanded of them.

California Privet

Plant either in Fall or Spring. It is the most beautiful and ornamental of all the hedges. Extremely thrifty and will stand severe pruning. **2-year plants, 12 to 18 in., \$4.00 per 100; 18 to 24 in., \$6.00 per 100; 2 to 3 ft., \$7.50 per 100.**

Japanese Barberry

This is not the common Barberry and can be planted anywhere without danger of being destroyed by the government. We consider the Japanese Barberry the best hedge plant in existence. It is beautiful throughout the year; its abundant crop of bright red berries makes it even more attractive in the Winter than the Summer. Its compact growth and thorny branches, after five years' growth, make a defensive hedge that will turn cattle. Is hardy almost anywhere in this country. **12 to 18 in., 15c each; 50 for \$7.00; 100 for \$12.50.**

Spirea or Bridal Wreath

Eminently suitable for forming fine hedges. A more graceful object than a Spirea hedge in full bloom is difficult to find. **12 to 18 in., \$2.00 per doz.; \$15.00 per 100. 18 to 24 in., \$3.00 per doz.; \$20.00 per 100.**

Hardy Climbing Vines

False Bittersweet

(*Celastrus scandens*). Hardy ornamental vine. Very effective with their bright colored fruit remaining all Winter. They are valuable for covering trellis work, trees or rocks and walls. They grow in almost any soil and situation. Fruit is about one-half inch in diameter, orange-yellow, with crimson seed. **35c each; 3 for \$1.00.**

Clematis Paniculata

This Clematis is by far the most popular of all the species in the American gardens. It is extremely showy when covered with the small, white, fragrant flowers which appear late in the season. **2-year-old, No. 1 plants, 50c each; 3 for \$1.30.**

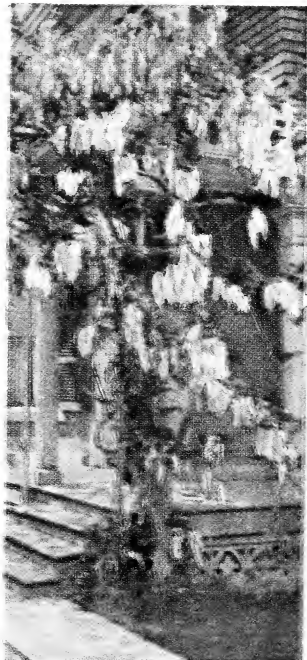
Honeysuckle

(*Lonicera*)

JAPONICA Var. HALLIANA. Leaves remain on during Winter. Flowers white, turning to yellow. **30c each; 6 for \$1.50; \$20.00 per 100.**

Chinese Wisteria

This is one of the best and commonest of hardy climbers. Pale green pinnate leaves and bears profusely dense, drooping clusters of purplish, pea-shaped flowers. It blooms in May and often in August or September. **3-year-old, large, healthy plants that will grow, 75c each; 2 for \$1.35.**



Chinese Wisteria.



Dr. W. Van Fleet Climbing Rose.

Climbing Roses

So many uses can be found for Climbing Roses that we have selected the best varieties and listed them below. A Rose hedge or fence may be wanted, or a variety to use on a trellis, for roadside planting or in banks. We will make specially attractive prices on these varieties in 1000 lots for roadside planting.

DR. W. VAN FLEET. Large flowers about 4 inches across, full and cup-shaped; color flesh-pink deepening to rosy flesh in center. Very fragrant.

PAUL'S SCARLET. Vivid scarlet shaded slightly crimson. Petals do not fade like many climbing Roses.

MARY WALLACE. Light, clear rose-pink, semi-double flowers.

FLOWER OF FAIRFIELD. Crimson flowers. Blooms two to three times a season. Blooms in clusters.

GARDENIA. Very fragrant blooms of a creamy yellow color.

AMERICAN PILLAR. Flowers in great profusion; bright pink; red berries in the Fall.

CLIMBING AMERICAN BEAUTY. Crimson-red flowers, 3 to 4 inches wide. Absolutely hardy.

CHRISTINE WRIGHT. Bright wild-rose-pink, 3 to 4 inches in diameter.

DOROTHY PERKINS. The well and favorably known climbing Rose.

EXCELSA. A beautiful red Rose.

MARY LOVETT. A beautiful new white Rose. Makes a great showing when in bloom.

Prices, any of above Roses, 2-year, field grown plants, 50c each; 10 for \$4.50; 50 for \$17.50; 100 for \$30.00.

Hybrid Rugosa Roses *Three Eskimo Beauties*

PINK—RED—WHITE. WILL GROW WHERE NO OTHERS WILL
By crossing the Rugosa Rose with the best of the double, everblooming varieties,

a new race has been evolved in which are retained the fine, vigorous growth, the extreme hardiness, the abundant and lasting dark green leaves of the Rugosa type, combined with the size and color of the best everblooming Roses.

Eskimo Beauties grow, thrive and bloom anywhere. They are the ideal cold climate Roses. The plants are on their own roots—grown from cuttings—no tender top to die back, no foreign roots to sucker; root and top are the same variety.

Eskimo Beauties — Rugosa Hybrid Roses— are free from mildew, disease and pests that attack other classes of Roses.

Hansa

Handsome in bud and bloom. Both are large, very full and double. The color is rich maroon-red.

Sir Thomas Lipton

Pure white; no tinge of pink or yellow—just pure white. The flowers are very double and borne in graceful clusters.

Belle Poitevine

The blooms are large and full, the petals gracefully incurved. Bright, clear, lively pink.

Price, 2-year-old, field grown plants, 50c each; 1 of each for \$1.25; 6 for \$2.25.

Evergreens

Three Most Popular Varieties.

Arbor-Vitae

GLOBE. Dense, dark green form, growing naturally in globe form. Dwarf habit. 12 to 15 in., \$1.50 each.

PYRAMIDAL (Var. Pyramidalis). Forms a tall, slender column of densely branched, dark green foliage. Very graceful tree, having a number of uses. 2 ft., \$2.50 each.

Spruce

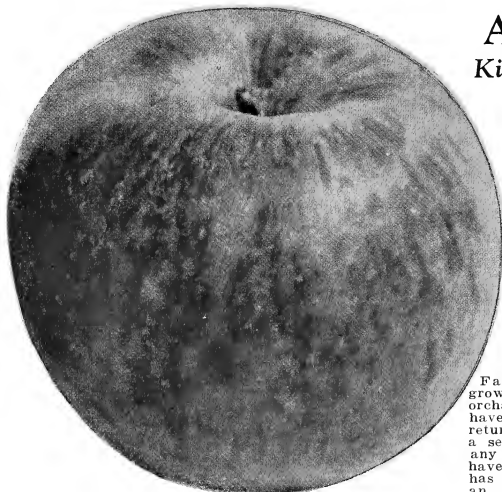
NORWAY (Excelsa). This tree is extensively planted in many of the states, rapid grower. 18 to 24 in., \$1.25 each; 2 to 3 ft., \$2.00 each.



THREE ESKIMO BEAUTIES.

Top—Sir Thomas Lipton. Center—Hansa.
Bottom—Belle Poitevine.

NOTE. We have a long list of the best varieties of evergreens. Anyone interested in any particular varieties or planting, can get full information and low prices by writing.



Duchess Apple.

Apples King of Fruits

Apples are no longer considered a luxury, but have become a staple article of food and the demand for them is increasing faster than the supply. America is the greatest Apple producing country on the globe, and must be depended upon to supply, not only the increasing demand of our own country, but of the foreign markets as well.

Farmers and fruit growers have found that orchards well cared for have given larger net returns per acre, during a series of years, than any other crops they have grown. There never has been a time when an orchard could be planted with a greater assurance of profit than now.

LIST OF VARIETIES:

Baldwin
Banana
Ben Davis
Delicious
Duchess
Early Harvest
Golden Sweet
Grimes Golden
Golden Winesap
Hyslop Crab
Jonathan

Maiden Blush
Northern Spy
Red Astrachan
Rhode Island Greening
Rome Beauty
Rambo
Stayman Winesap

Transcendent Crab
Wagener
Wealthy
Whitney Crab
Wolf River
York Imperial
Yellow Transparent

2-year-old trees, 4 to 5 ft., 60c each; 10 for \$5.00; 25 for \$12.50; 100 for \$40.00. 2-year-old, 5 to 7 ft., 80c each; 10 for \$7.50; 25 for \$16.00; 100 for \$55.00. 1-year-old, 3 to 4 ft., 40c each; 10 for \$3.25; 25 for \$6.50; 100 for \$25.00.

Cherry Trees

A good Cherry orchard for commercial purposes is one of the most profitable ventures a farmer can undertake, because there is no other fruit so much in demand at such good prices. The trees are very thrifty and prolific, bearing large crops annually.

The fruit is easily picked and it is always in great demand in its season, brings prices amply sufficient to repay the investment and give fancy profits. No home orchard is complete without some Cherry trees.

LIST OF VARIETIES:

Black Tartarian Governor Wood
Early Richmond Large Montmorency
Yellow Spanish

2 to 3 ft., 40c each; \$3.50 per 10; \$8.50 per 25; \$34.00 per 100. 3 to 4 ft., 60c each; \$5.50 per 10; \$12.50 per 25; \$48.00 per 100. 4 to 6 ft., 95c each; \$8.00 per 10; \$18.00 per 25; \$55.00 per 100.



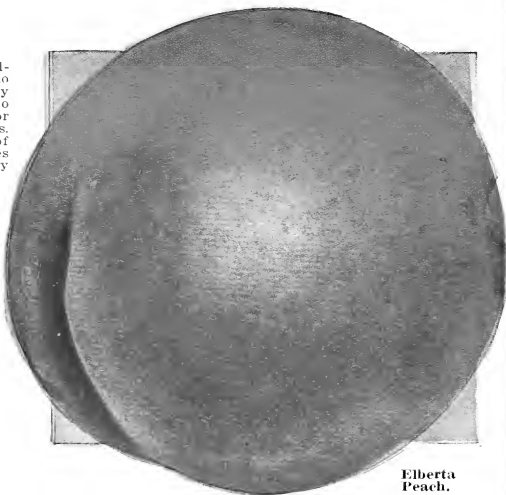
Montmorency Cherries.

Peaches

The nature and quality of the Peach is so well and universally known that it needs no word of introduction or commendation from us. Its importance as one of the necessary luxuries of the home is keenly felt by every family and was never more emphasized than at the present when the scarcity and high prices put it beyond the reach of everyone, who does not have his own trees.

LIST OF VARIETIES:

Beers Smock		
Banner		
Belle of Georgia		
Crosby		
Carman		
Champion		
Crawford's Early		
Early Elberta		
Elberta		
Fitzgerald		
Gen. Funston		
Engle Mammoth		
Heath Cling		
J. H. Hale	Mt Rose	Salwey
Kalamazoo	New Prolific	Stump
Late Crawford	Niagara	Wonderful
Lemon Free	Rochester	Wilma



Elberta
Peach.

2 to 3 ft., 30c each; \$2.75 per 10; \$5.50 per 25; \$20.00 per 100. 3 to 4 ft., 50c each; \$4.00 per 10; \$9.00 per 25; \$30.00 per 100. 4 to 6 ft., 75c each; \$6.00 per 10; \$14.00 per 25; \$50.00 per 100.

Plums

Plum trees are often called the poor man's tree because they require so little room to grow and are always such prolific bearers. The market's demand for high grade Plums is almost unlimited, and for dessert, cooking and canning, no fruit is more delicious.

Use Plum trees to fill the places on your farm where other fruit trees will not have room to grow. Plant a commercial orchard of Plums; give it good attention and it will bring you large profits and prove a good investment.

LIST OF VARIETIES:

Yellow Egg	Bradshaw
Abundance	Shipper's Pride
4 to 5 ft., 60c each; \$5.50 per 10; \$12.50 per 25.	5 to 7 ft., 80c each; \$7.50 per 10; \$17.50 per 25.

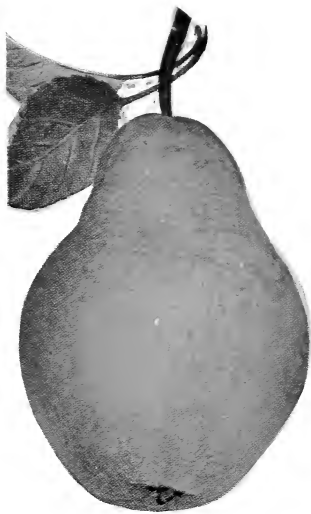
Pears

Our Pear trees are of the finest quality for transplanting, for they are well developed, stocky trees. In the course of five years they will be bearing a fine crop of fruit.

We have both standard and dwarf varieties. For the permanent orchard we recommend the standard varieties, the dwarf being better for a small lot.

LIST OF VARIETIES:

Anjou	Duchess
Bartlett	Flemish Beauty
Clapp's Favorite	Kieffer
3 to 4 ft., 60c each; \$5.00 per 10; \$12.00 per 25.	4 to 6 ft., 75c each; \$7.00 per 10; \$16.25 per 25.



Bartlett Pear.

Grapes for All Purposes

AGAWAM. Deep red or maroon. Large, meaty berries borne in large bunches. 1-yr., 25c each; \$2.50 per doz. 2-yr., 30c each; \$3.25 per doz.

CONCORD. Keeps well, ships well and sells well. Bunches big, berries are juicy, sweet and delicious. Concord overcomes local Grape trouble and is safe to plant. 1-yr., 20c each; \$2.25 per doz.; \$10.00 per 100. 2-yr., 25c each; \$2.75 per doz.

CATAWBA. The last to ripen; bunch and berries are large; the flesh is juicy, pulpy and possesses a delightful sugary flavor. 1-yr., 25c each; \$2.75 per doz. 2-yr., 30c each; \$3.25 per doz.

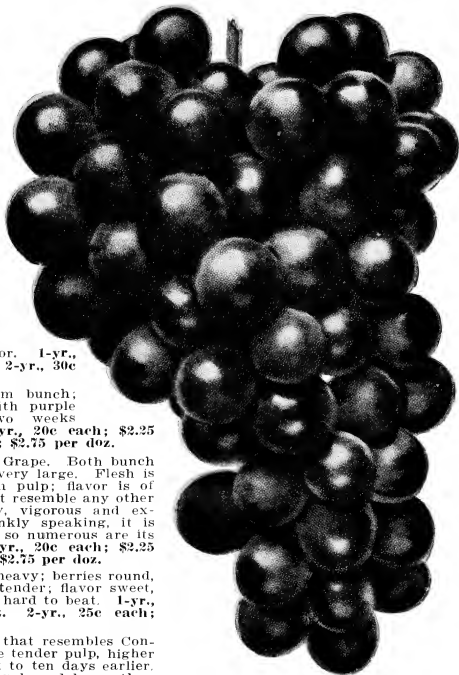
MOORE'S EARLY. Medium bunch; berry large, jet black with purple bloom; ripens fully two weeks earlier than Concord. 1-yr., 20c each; \$2.25 per doz. 2-yr., 25c each; \$2.75 per doz.

NIAGARA. Standard white Grape. Both bunch and berries are large to very large. Flesh is firm, juicy, without much pulp; flavor is of the very best, and does not resemble any other sort. The vine is hardy, vigorous and extremely productive. Frankly speaking, it is hard to describe Niagara, so numerous are its points of superiority. 1-yr., 20c each; \$2.25 per doz. 2-yr., 25c each; \$2.75 per doz.

SALEM. Bunch large and heavy; berries round, and an inch thick; flesh tender; flavor sweet, aromatic. For table it is hard to beat. 1-yr., 20c each; \$2.25 per doz. 2-yr., 25c each; \$2.75 per doz.

WORDEN. A black Grape that resembles Concord closely but with more tender pulp, higher quality and ripens a week to ten days earlier. A little larger in both bunch and berry than Concord. 1-yr., 20c each; \$2.25 per doz. 2-yr., 25c each; \$2.75 per doz.

SPECIAL PRICES ON 1000 LOTS



Concord Grapes.

Raspberries and Blackberries

CARDINAL RASPBERRY. Dark red or almost purple berries through a long season. Fine quality. \$1.25 per 25; \$3.00 per 100; \$12.00 per 500.

CUMBERLAND RASPBERRY. The largest of all blackcaps; firm and a good shipper, and one of the most profitable as a market berry. \$1.25 per 25; \$3.00 per 100; \$12.00 per 500.

KANSAS RASPBERRY. Plant is a strong grower and will stand extremes of weather. \$1.25 per 25; \$3.00 per 100. \$12.00 per 500.

CUTHBERT RASPBERRY. Fruit large, dark crimson, firm, sweet, rich, highly flavored, and as beautiful as strawberries. \$1.25 per 25; \$3.00 per 100; \$12.00 per 500.

ELDORADO BLACKBERRY. Fruit very large, jet black, good shipper, good quality, and a great producer. We personally recommend this variety above any other that is offered. Comparatively new but has proven itself to be the best of all varieties. 50c per 10; \$4.25 per 100; \$20.00 per 500.

Lucretia Dewberry 10 plants for 50c; 100 plants for \$3.00.

Asparagus Plants \$1.00 per 25; \$3.00 per 100.

Rhubarb Plants 15c each; \$1.00 per 10; \$7.50 per 100.

Shade Trees

Trees, with their great height, symmetry and graceful habits are the keynote of the general landscape. Who would be without their shady comfort in the Summer time, or fail to feel the deep thrill of opening buds in the Spring and the first flutter of green leaves? Much of the loveliness and charm of Autumn would be gone without the gay red and yellow foliage of the shade trees.

Ash - Fraxinus

AMERICAN WHITE (Americana). A handsome, hardy, broad-headed, quick-growing shade tree, sometimes reaching 120 feet in height. Very valuable in landscape work, for park and street planting. 6 to 8 ft., \$1.25 each.

Elm - Ulmus

Elms are considered the best of all the street trees and are used in greater quantities than probably all other kinds or varieties combined. In planting Elms do not crowd them.

MOLINE. Our new introduction. A beautiful tree for avenue planting. Very large leaves; very compact growth. 8 to 10 ft., \$2.00 each.

AMERICAN (Americana). Very valuable for park planting, for avenues, and as a shade tree for lawns. One of the most majestic and graceful of our shade trees. Hardy, a rapid grower, resists drought well, and is long lived. 6 to 8 ft., 75c each; 8 to 10 ft., \$1.50 each; 10 to 12 ft., \$2.00 each.

Dogwood - Cornus

FLORIDA (White Dogwood). Handsome tree of medium size, flowering after Redbuds when most other trees are still bare. Great white flowers are three inches across, lasting in favorable weather for several weeks. The bright red bark on its young branches makes it cheery in Winter. Blooms when small. 2 to 3 ft., 70c each; 3 to 4 ft., \$1.00 each.

FLORIDA (Var. Rubra). A very beautiful form of the Dogwoods with blossoms that are pink on the outside of the petals. 2 to 3 ft., \$4.00 each.

Poplar

LOMBARDY (Nigra var italica). One of the characteristic trees of Italy. With age, the Lombardy Poplar becomes one of the most striking and picturesque trees, particularly when some of the sprouts are allowed to grow about the old stock. Excellent for landmarks. 6 to 8 ft., 50c each; 8 to 10 ft., \$1.00 each; 10 to 12 ft., \$1.25 each.

Tulip Tree

YELLOW WOOD (Liriodendron tulipifera). Tall, handsome, hardy, ornamental, pyramidal habit, rapid growth. Has clean foliage, light bluish green; rarely attacked by insects; fragrant yellow and orange flowers in June. 6 to 8 ft., \$1.50 each.



Lombardy Poplar.

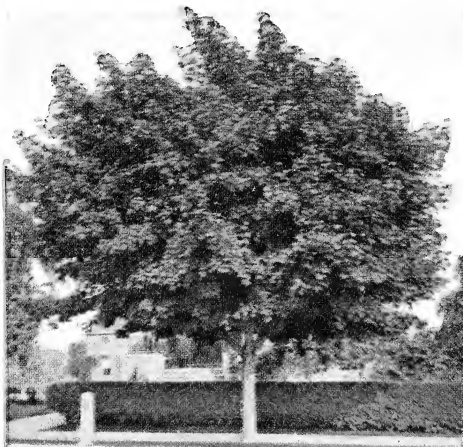
SHADE TREES—Continued.

Linden - Tilia

AMERICAN LINDEN (Basswood). A beautiful, rapid-growing tree with large, broad leaves and fragrant flowers. The bloom furnishes the best of bee pasture. The Linden should be extensively used as a lawn tree; it is also very valuable for park and street planting. It thrives in moist, rich soil, but does well in any good soil. 6 to 8 ft., \$1.25 each.

Maple - Acer

BOX ELDER (Negundo). Large, spreading tree of rapid growth; very hardy, and a good drought resister. Largely planted for wind-breaks and timber. Leaves resemble those of the Ash. 8 to 10 ft., \$1.00 each.



Norway Maple.

NORWAY (Platanoides). Large, handsome tree with a compact rounded head of spreading branches, attaining a height of 75 feet. The broad, deep green leaves cast a dense, refreshing shade. One of the best and most beautiful trees for the street, the park, cemetery or lawn planting. 6 to 8 ft., \$1.50 each; 8 to 10 ft., \$2.50 each.

SILVER (Sacharinum). This is one of the best known of all Maples. It is an ornamental tree with wide, slender, spreading branches. Thrives almost anywhere, but grows very rapidly in moist, rich soil. 6 to 8 ft., 75c each; 8 to 10 ft., \$1.00 each.

SUGAR or ROCK (Sacharum). Large trees to 120 feet with gray bark. Long lived. Grows well except in damp, soggy soils. An excellent street and shade tree of upright, dense growth. Leaves turning bright yellow and scarlet in Autumn. 6 to 8 ft., \$1.50 each; 8 to 10 ft., \$2.25 each.

SCHWEDLERI (Purple-Leaved Norway Maple). One of the most beautiful of the shade trees. In early Spring the young leaves are bright red, changing to purplish green as they grow older. In Autumn they are golden yellow. The tree has a round, compact head and large leaves which cast a dense shade. 6 to 8 ft., \$2.00 each.

Flowering Crab

ELEYI. This is a purple-leaved, vigorous growing Crab Apple of recent introduction from England. The flowers are single, of a deep pink or red color. This is a distinctly valuable Flowering Crab and has purplish red foliage, as well as the attractive red flowers. 2 to 3 ft., \$2.50 each.

ALDENHAMENSIS. The Aldenhamensis is a new Flowering Crab, originating as a chance hybrid on the place of Hon. Vicary Gibbs at Aldenham, England. This is considered the finest of all the red-flowered Crab Apples, flowering after most of the other Crabs have finished. Double red. 2 to 3 ft., \$2.50 each.

Willow - Salix

GOLDEN BARK (Vitellina aurea). A most graceful tree of large size. Its long, wavy branches of highly colored golden bark are very attractive. Very conspicuous during the Winter months. Showy at any time. 4 to 5 ft., \$1.25 each.

Special on Shade Trees

We grow large quantities of shade trees and many varieties which space does not allow us to catalog. If you are in the market for twenty-five or more of a kind, let us quote you special prices.

Ornamental and Flowering Trees

Flowering Crabs

BECHTEL'S. Pale pink double flowering; sweet scented flowers; plant of an upright habit. Can be used as specimen plants. Very attractive in groups. 3 to 4 ft., \$1.50 each.

FLORIBUNDA. Bright pink flowers upon opening turning to pure white. Small yellow fruit in the Autumn. 3 to 4 ft., \$1.50 each.

PARKMAN. A broad, spreading form with very bright rose colored flowers of a semi-double form. 3 to 4 ft., \$1.00 each.

ATROSANGUINEA. Beautiful rose-pink flowers during the blooming season. Tree grows into a spreading form that is very attractive. 3 to 4 ft., \$1.50 each.

A Promise of Springtime.

Pussy Willow - *Salix Caprea*

Not the wild Pussy Willow, but a cultivated variety that has made a sensation wherever it has been shown. Branches of this variety have been selling at retail during the Winter months in cities at from \$1.00 to \$2.00 per dozen.

You Can Grow Them on Your Own Lawn.

Enjoy these dainty silvery flowers every Winter. A beautiful round shrub in Summer. Wherever you have room for a lilac or snowball, you have room for a Pussy Willow. Use them for tall screens or backgrounds.

Plant one or more of them this Fall. Cut the ends of the branches in January or February, place them indoors in a vase of water and watch them unfold their large catkins of silvery pink, from 1 to 2 inches long. They will repay you many times their cost in pleasure each Winter. 4 to 5 ft., 60c each; 3 for \$1.25; 6 for \$2.00.

Catalpa Bungei

(Umbrella). Just the tree to be used for formal effects. Propagated on a stem of the *Catalpa Speciosa*. It makes a very unique, ornamental tree. Has a broad, dome-shaped head at the top of a long, straight stem. When the tree attains its full growth, the top is often 15 feet in diameter and not over 3 to 4 feet tall on top of a strong stem from 5 to 7 feet in height. An exceptionally hardy variety. 5 to 7 ft., 1-yr. heads, \$1.50 each; 2-yr. heads, \$2.60 each.

European Mountain Ash

(*Sorbus aucuparia*). Ornamental deciduous tree with beautiful foliage, which turns orange-red in the Fall. The fruits are showy and often remain all Winter, if not eaten by the birds. Not particular as to soil. 6 to 8 ft., \$1.65 each; 2 for \$3.00.



Pussy Willow.



Catalpa Bungei.



Philadelphus Virginal.

Philadelphus Virginal

(Snowstorm *Philadelphus*)

A wonderful, grand, sweet scented shrub. Called the Snowstorm *Philadelphus* because of its being literally covered and weighted down with clear snow-white flowers in the Spring. Its large, double crested, sweet scented flowers are borne in great profusion from the ground up. It is very hardy and of easy cultivation. It is also everblooming in habit, will continue to bloom through the Summer months. They make a wonderful hedge where a tall hedge can be used. For hedges plant them 2 feet apart in a single row. 18 to 24 in., 45c each; \$35.00 per 100. 2 to 3 ft., 65c each; \$50.00 per 100.

All varieties in this catalog are especially adapted to Fall planting.

Prunus Triloba

(Double-Flowering Plum)

Among the flowers of early Spring, few are more lovely than those of this small Almond. Early in the Spring before the leaves appear, the whole tree is decked in a fleecy cloud of double, pink blossoms, on long, slender branches. Wonderful for bouquets. Hardy everywhere. Can be grown either in bush or tree form, and will form a low-headed tree 8 to 10 feet in height. 2 to 3 ft., \$1.00 each; 3 to 4 ft., \$1.25 each.



Prunus Triloba.

A Wonderful Bush Rose from China

HUGONIS ROSE

Like many other rare floral gems from the Orient, this variety is spectacular in its exotic beauty. Imagine a many-branched shrub, 6 to 8 feet tall, rearing slender sprays in all directions, gracefully arching beneath loads of bright yellow, single flowers, an inch and a half in diameter—and you have *Rosa Hugonis* at its best. The flowers are borne on the previous season's growth and appear very early in the Spring, before the foliage. Later in the season it throws up many new branches (next season's flowering wood) and these branches are of a beautiful deep red color, which makes the shrub a garden attraction almost throughout the growing season. **Strong field-grown plants, each, 75c; 3 for \$2.00.**



Hugonis Rose.